

sowEH Scholarship Program 2026



**Get Your
Scholarship Today!**

Everyone Deserves
A Scholarship
for Better
Future



Information Booklet



- ☒ Up to 100 % Tuition Fee
- ☒ Mentorship & Networking
- ☒ Elevate Academic profile

sowEH offers a wide range of scholarships, including Women in Science, merit-based awards, women empowerment programs, impact initiatives, and more. **Scan respective QR code for more details.**

Find the scholarship that best matches you, and seize the opportunity Today!

All scholarship application should be submitted on
scholarships@soweh.org



Scholarship App



www.soweh.org



info@soweh.org



sowEH Scholarship Program 2026 – 1st Cycle

SEEDS

(Support Education for Empowerment and Development of Society)

PREAMBLE

The **sowEH** (*Sow Education and Health*) **Scholarship Program**, launched under the **SEEDS Program** (*Support Education for Empowerment and Development of Society*), is a cornerstone initiative of sowEH's commitment to education, empowerment, and community development. The program aims to **nurture talent, reward merit, and remove barriers to learning** by offering meaningful financial and academic support to deserving students who aspire to create positive change in their communities.

sowEH believes that education is the most powerful tool for building a sustainable and self-reliant society. Through its **merit-cum-need-based scholarships**, the organization recognizes students who demonstrate exceptional potential, dedication, and integrity. Many of these scholarships are established as **tributes to the region's visionary educators and community leaders** whose lifelong contributions continue to inspire future generations. Others are designed around themes such as **women empowerment, women in STEM, alumni engagement, and pure merit-based recognition**.

The success of this program depends on collective effort. sowEH invites **supporters, advisors, educators, and students** to actively contribute to this mission, whether by donating funds, volunteering expertise, mentoring students, or promoting awareness of sowEH's initiatives. Together, we can create a ripple effect of opportunity and empowerment that strengthens our entire community.



Table of Contents

Introduction	1
sowEH Patrons	2
sowEH Intellectual Partners.....	5
sowEH Team.....	9
sowEH Service for Impact Scholarship Program (SISP)	11
sowEH Scholarship for Women in STEM	13
sowEH Women for Women Empowerment Scholarship.....	15
sowEH Merit-cum-Need Based Scholarship	16
Alija Ustad Ghulam Uddin Ghulam Hunzai Memorial Fund for Educational Change ..	17
The First Scholar Dr Sher Zaman Award for Academic Excellence	18
Zia-ul-Karim Memorial Scholarship for Education & Excellence	19
NBH School Altit Hunza Alumni Scholarship: Empowering the Next Generation	20
Email Format:.....	21
Important Notice 1:	21
Important Notice 2:	21
Sample Personal Statement.....	22



Introduction

This **sowEH Information Booklet** (IBL) presents the complete **list of scholarships** available for the 2026-2027 cohort, along with detailed descriptions, eligibility criteria, and application guidelines. **We encourage all students** to explore these opportunities, identify the scholarships that best align with their aspirations, and **take a confident step** toward achieving their educational goals.

Beyond scholarships, this IBL also highlights our **patrons**, who have supported sowEH since its inception, and our **knowledge and intellectual partners**, whose moral support and valuable insights have played a pivotal role in shaping and refining the ideas behind sowEH. It also acknowledges the unwavering commitment of our **team members**, who have worked diligently to translate these ideas, guided by the wisdom of our partners and under the mentorship of our patrons, into meaningful initiatives.

At sowEH, we firmly believe that our work is not an act of charity but a **responsibility**—a way of giving back to our younger generation who rightfully deserve access to opportunities earned through their dedication and hard work. This spirit of service is deeply rooted in the legacy of our **forefathers**, whose perseverance and vision transformed our region into a vibrant, educated, and progressive society.

Through our programs and projects, sowEH strives to **honor its legacy** by recognizing and celebrating individuals who continue to uplift our community through education, art, music, sports, and other fields. While the initiatives presented here represent our initial efforts, they are only the beginning. sowEH looks forward to expanding its reach, engaging more changemakers, and continuing the mission of building a sustainable and empowered future for our region.

Appeal Note:

*We invite all students, teachers, staff, and community members to follow and subscribe to our social media platforms by **scanning the QR codes above**.*

We will be sharing videos and updates about sowEH activities, including how to fill in scholarship forms, participate in programs, and write strong personal statements and recommendation letters. Stay connected to learning, contribute, and help build a stronger, more informed community



sowEH Patrons

We extend our profound and heartfelt gratitude to our esteemed patrons, the guiding force and moral compass of sowEH. Their unwavering faith, generosity, and wisdom form the cornerstone of our mission to nurture education, promote health, and foster sustainable community development. It is through their steadfast belief in the power of collective action and community-driven change that sowEH continues to evolve into a trusted, visionary platform for empowerment and transformation.

Our patrons are not merely supporters; they are architects of progress and custodians of hope. Their leadership, compassion, and foresight have enabled sowEH to translate ideals into impactful initiatives, shaping opportunities where once there were challenges. Each act of mentorship, each word of encouragement, and each gesture of trust from them strengthens our resolve to build a transparent, accountable, and inclusive organization rooted in merit and service.

Through their continued advocacy, sowEH stands not only as an organization but as a movement, one that embodies the shared dreams of a community striving for knowledge, well-being, and dignity. The contributions of sowEH resonate far beyond the present, inspiring a legacy of purpose and progress that will empower generations to come.

To our patrons, we owe our deepest respect and gratitude for being the torchbearers of vision, the guardians of integrity, and the driving force behind sowEH's pursuit of a more enlightened, equitable, and self-reliant society.



MR. SABBAH UDDIN is a seasoned professional with over **two decades of leadership in administration, strategic planning, and community development.** With a strong background in public service, policy formulation, and institutional growth, he remains deeply committed to social progress and sustainable development. As **President of POLARIS Group, Mr. Sabbah** continues to apply his expertise to strengthen communities through effective governance and coordination.



sowEH takes immense pride in recognizing **Mr. Sabbah Uddin** as its **first and founding patron**, whose vision, wisdom, and unwavering belief in community empowerment laid the foundation of our journey. A man of integrity, foresight, and humility, Mr. Sabbah Uddin embodies the very values sowEH stands for, *trust, compassion, merit, and service to humanity.*

As the first patron, his encouragement and confidence in sowEH's mission ignited a shared sense of purpose, guiding us to transform ideas into tangible initiatives that uplift education, promote health, and strengthen community sustainability. His commitment to empowering the next generation through knowledge and opportunity continues to inspire our team, partners, and supporters.

Mr. Sabbah Uddin's name has become synonymous with integrity and wisdom within the sowEH family. His guidance during the organization's formative phase helped establish the ethical framework and community-centered approach that remain at the heart of everything we do.

We remain deeply grateful for his trust and mentorship, which continue to illuminate our path forward. As sowEH grows and expands its reach, we proudly acknowledge **Mr. Sabbah Uddin** as the cornerstone of our patronage, a visionary leader whose unwavering support will forever be remembered as the beginning of sowEH's enduring journey toward education, health, and hope.



MR. GHAFOR AHMAD Hailing from Gojal, Hunza, is a distinguished entrepreneur and global business leader with over 17 years of experience in building successful, high-impact organizations. He is the Co-founder and Chief Global Revenue Officer of **Klaim Pvt Ltd**, a leading fintech company transforming healthcare payments, and the **founder of AGA Medical Billing Company in the UAE**. His leadership has driven significant milestones, including securing major international investments and establishing trusted, value-driven enterprises.



sowEH is deeply honored to recognize **Mr. Ghafoor** as one of its **esteemed patrons**, whose unwavering support, wisdom, and encouragement have been instrumental in strengthening the foundation of our organization. A man of integrity, humility, and foresight, Mr. Ghafoor embodies the spirit of service and commitment that defines sowEH's mission to empower communities through education, health, and sustainable development.

From the earliest stages of our journey, Mr. Ghafoor has been a steadfast supporter and a source of thoughtful guidance. His belief in the potential of community-driven change and his consistent encouragement have inspired sowEH to pursue its goals with greater determination and purpose. Through his trust and advocacy, he has helped sowEH build credibility, expand its reach, and remain rooted in the values of fairness, transparency, and compassion.

As a patron, Mr. Ghafoor continues to play a vital role in nurturing the organization's growth and moral strength. His presence reminds us that true leadership lies not in position but in contribution, in the quiet yet powerful acts of encouragement that inspire others to act for the greater good.

sowEH expresses its heartfelt gratitude to Mr. Ghafoor for his trust, wisdom, and enduring support. His belief in our mission reinforces our resolve to keep working for a more educated, healthier, and self-reliant community — one that reflects the very values he stands for.



sowEH Intellectual Partners

sowEH values its intellectual partners—experts from diverse fields who guide its strategic initiatives, providing mentorship to advance education, health, and sustainability. Their insights strengthen sowEH’s mission of community empowerment. Moving forward, sowEH aims to welcome more accomplished individuals to expand its network, enhance its impact, and build a stronger foundation for lasting, multigenerational change.

At sowEH, our intellectual partners represent the backbone of trust, integrity, fairness, and innovation. These experts, drawn from diverse fields, provide valuable intellectual guidance to our initiatives while strengthening the organization’s credibility through their professional standing and contributions to society.

Looking ahead, sowEH aims to engage young professionals and intellectuals from all walks of life to build an inclusive, diverse, and innovative platform—one where initiatives are shaped by real grassroots experiences and guided by those who have faced and overcome the very challenges we seek to address.

We welcome insights and ideas from every segment of society to help refine and advance sowEH’s mission. Together, we can create a more progressive, equitable, and empowered community.



Dr Habiba Shah is an Intellectual Partner at sowEH, bringing extensive academic expertise and research leadership. Currently she serves as an **Associate Professor at Dow University of Health Sciences, Karachi.**

Dr Habiba holds Ph.D. in Food Science & Technology from the University of Karachi. With **over 20 publications** and recognition including the EIT Food Innovator Fellowship, her mentorship and curriculum development strengthen sowEH’s HEAL and SEEDS programs, advancing evidence-based community development and health initiatives.

Mr. Ejaz Karim joins sowEH as an Intellectual Partner under the Knowledge Partner Initiative, bringing visionary leadership and a passion for technology and community development. As **Co-founder of uConnect** and creator of **GilgitApp**, he has trained over 1,000 engineers, fostered 30+ startups, and provided scholarships to students.

Ejaz’s work empowers youth, drives innovation, and strengthens Gilgit-Baltistan’s tech ecosystem, guiding sowEH’s mission to inspire, educate, and equip the next generation of changemakers





Mr. Irfan Ullah Baig, an intellectual partner at sowEH, is a visionary tech entrepreneur and community advocate dedicated to driving positive social change through technology. As **Founder of NorthNine**, he creates inclusive digital solutions that expand access, opportunity, and empowerment.

Irfan actively supports grassroots initiatives in education, youth development, and digital literacy, mentoring students, organizing local tech workshops, and **providing pro bono guidance** to early-stage social **impact startups**, bridging the digital divide and fostering innovation.

Miss Zahra Nooreen, Intellectual Partner at **sowEH**, is a trailblazing Pakistani entrepreneur and Founder & CEO of **SheDev Pvt Ltd**, the first women-led tech company in Gilgit-Baltistan.

A passionate advocate for women's digital empowerment, she has **trained over 2,000 women**. Serving national and regional councils, she actively mentors youth. Through her work, **Zahra drives innovation**, digital inclusion, and **STEM leadership**, inspiring the next generation of women leaders across Pakistan.



Mr. Rashid Amin, an intellectual partner at sowEH, is a **visionary artist** from Danyore, Gilgit-Baltistan, whose deep connection with nature inspires his **sculptures**. With over ten years of experience, his work has been showcased nationally and internationally, including China and Dubai. Now **based in Nairobi, Kenya**, Rashid continues to explore nature's beauty and complexity through sculpture art.

His insight, creativity, and artistic vision make him a valuable advisor, nurturing talent, empowering youth, and inspiring communities through art and innovation.

Dr Fayaz Haider, an intellectual partner at sowEH, is a **passionate young medical professional** with a strong academic and social service background. A true symbol of meritocracy, he has achieved remarkable success through perseverance and dedication. **He served** the people of **Gilgit Baltistan, including Hunza for three years**, as a medical doctor.

As a medical doctor he developed a deeper understanding of the health challenges and community needs at a grassroots level. Currently serving at **Russell's Hall Hospital in Dudley, UK**, he remains dedicated to supporting sowEH's community-driven initiatives in education and health.





Mr. Naeem Sardar, an intellectual partner at sowEH, is a visionary tech entrepreneur and **Co-Founder of uConnect**, a leading software and digital solutions company in Gilgit-Baltistan. Since 2014, he has driven innovation, launched successful software products, and empowered local youth through the **uConnect Skill Development Program**.

A **strong advocate for Pakistan's IT ecosystem**, Naeem fosters digital education, entrepreneurship, and regional tech growth, making him a valuable advisor supporting sowEH's mission of community empowerment through technology, education, and innovation.

Dr Samina, an intellectual partner at sowEH, is a **distinguished medical practitioner from Hunza** and an alumna of AKHSS, Hunza. She specialized in Pulmonology at Indus Hospital and has served at **Heartlands Hospital Birmingham**. Currently, she is a Senior Fellow at the **Royal Derby Hospital, UK**.

Passionate about women empowerment, self-reliance, and collective progress, Dr. Samina, a former sowEH volunteer, remains dedicated to advancing the organization's mission in education and health.



Mr. Rahim Gohar, an intellectual partner at sowEH, is a **Medical Physics Specialist in Oncology at Genesis Care, Australia**. Holding a postgraduate qualification in Radiation Oncology from AKUH, Karachi, he previously led the Medical Physics Section and served as **Radiation Safety Officer at AKUH Nairobi, Kenya**.

Through sowEH, he raises awareness about cancer and other chronic diseases, promotes healthy lifestyles, and empowers communities by combining scientific expertise with education and public health advocacy.

Mr. Salman Hunzai, is a **miniature painter** specializing in Indo-Persian art, graduating from the **National College of Arts in 2013**. His work celebrates mountains at sunrise and sunset, blending intricate detail and vibrant color to create a spiritual dialogue between nature and light.

Through sowEH, **Salman passionately inspires young artists**, preserves indigenous art forms, and uses visual storytelling to strengthen connections with culture, environment, and community identity for future generations.





Mr. Masood Karim, a sowEH intellectual partner, is a seasoned development professional with **extensive experience** leading international organizations, including **Oxfam, Concern Worldwide, World Vision**, and **WASEP under Aga Khan Planning & Building Services**.

Currently serving as **UN Partnership Lead** at Save the Children International, he holds a Business Administration degree from FAST University, Islamabad. Passionate about social activism, he leverages the sowEH platform to empower underprivileged communities and drive meaningful, lasting societal change.

Miss Nausheen Barkat, sowEH's **Intellectual Partner** and a visionary entrepreneur from Hunza, truly reflects sowEH's commitment to **education, women empowerment, and sustainability**.

As the founder of **Asqurr**, an organic honey brand, she promotes **women empowerment through sustainable beekeeping**, fostering financial independence, skill development, and environmental balance. Her work perfectly aligns with sowEH's vision of building **self-reliant, knowledge-driven, and progressive communities**.



Mr. Niaz Hunzai is a renowned **multi-instrumentalist, musician, vocalist**, and passionate youth empowerment advocate from Hunza. **Born into a musical legacy**, he overcame physical challenges and societal pressures (*as specially abled person*) to master multiple instruments, perform nationally and internationally including **TEDx Islamabad** and **Spain's SALT Festival** and mentor young talents.

Currently, he teaches at top institutions like **LUMS and Lahore Grammar School, Pakistan**. At sowEH, his journey inspires perseverance, dedication, and the transformative power of dreams for youth.



sowEH Team

The **sowEH team** is a dedicated group of professionals, educators, and community leaders united by a shared vision of **empowerment, education, and sustainable development**. Combining expertise across education, health, community engagement, and innovation, the team works tirelessly to design and implement impactful programs. Their commitment, creativity, and collaborative spirit ensure that sowEH's initiatives not only reach communities effectively but also inspire long-term growth, resilience, and positive change.



Mr. Asif Ali, the President of **sowEH**, brings over **8 years of expertise** in organization development, policymaking, operations and administration, thriving sowEH toward excellence.

Currently based in the **United Kingdom**, he is actively engaged in multiple startup ventures. **As the founder and principal visionary of sowEH**, Mr. Ali drives the philosophy of “**sowing seeds**,” fostering education, health, and sustainable community development.



Dr Iftikhar H. Barcha is a **Co-Founder of sowEH** and serves as **Deputy President (Strategy & Development)**. He is an **academic** and **entrepreneur**, holding a **Ph.D. in Transportation Engineering** from China.

He is the founder of **TradePal China**, an export venture promoting innovation and sustainable growth. Dr. Iftikhar embodies the spirit of progress and development through his unique blend of academic excellence and entrepreneurial vision.

Dr Fatima Bano is a **Co-Founder** of **sowEH** and **Deputy President (Communication & Engagement)**. She has served as physician at **AKU, Karachi** and holds an **MSc in Digital Health** from the UK on **British STEM Scholarship**.



Currently pursuing a **Ph.D. in AI in Heart Failure** in the UK, she is the visionary behind sowEH's **STEM and Women Empowerment Scholarships**, reflecting her strong commitment to advancing women's education, leadership, and health equity.

Miss Farheen, **Director of Communication & Awareness** at **sowEH**, is a development professional with a strong academic and community background. She holds **master's degrees from LSE & SOAS, London**.



With international experience including **ITREB USA** and **Save the Children UK**, she is co-initiator of the **Women Empowerment Scholarship**. A former sowEH volunteer, Farheen now leads the organization, enhancing its regional and global outreach.



Mr. Mukhtar Ali is **Director of Station & Monitoring** at sowEH. He is an active social worker and a successful businessman in Hunza, also holds a **BS degree in Computer Science** from **COMSATS University Islamabad**.

Mr. Mukhtar Ali **has led numerous initiatives at sowEH**, including exhibitions and science workshops. He is the backbone of our on-ground operations from the start, including the **registration** of the organization and **providing it with legal status**.



Mr. Tameez Uddin Khwaja, **Director of Finance** at sowEH, is a professional banker serving in Hunza. He holds a **bachelor's degree in business and finance** and previously served as **Volunteer Lead** at sowEH.

With extensive experience and an active mind, Mr. Tameez is a **driving force behind** our financial management and **transparency**. Finance being the engine of any organization, Tameez plays a pivotal role in sowEH's initiatives.

Mr. Mujahid Ali from serves as **Director of Station & Activities** at sowEH, bringing his expertise as a seasoned **trekking master** to the organization. With extensive experience in high-altitude terrains and local communities, he ensures effective monitoring of sowEH's **physical activities**.



His deep knowledge of the region and practical skills strengthen program implementation, promote safety, and support sowEH's mission of sustainable community development and empowerment.

Miss Saima Noor,

serving as **Secretary** at sowEH, brings deep expertise in **shaping and advancing initiatives** for greater impact. With a degree in **Psychology**, she applies her knowledge to design programs that effectively empower communities.



Currently pursuing her **Master's in China on a fully funded scholarship**, Saima is **also engaged with China's education system**, adding unique insights that will further strengthen and drive sowEH's educational initiatives in the future.



Miss Nelum Javed, from Hassanabad, Hunza, is an accomplished **Social Media Marketer** and **Master Trainer** who has served as **Marketing Lead at SheDev Pvt Ltd**. With vast experience in digital education and women's empowerment, she has trained over **350 students** across **20+ batches**.

At sowEH, she leads **Marketing and Awareness Campaigns**, amplifying the organization's mission across **Gilgit-Baltistan and beyond** through creativity and impactful communication.



sowEH Service for Impact Scholarship Program (SISP)

The sowEH Service for Impact Scholarship Program is a distinctive, fully funded opportunity designed to support talented students while equipping them with real-world experience. The program covers a full semester fee, provides a monthly stipend, and offers practical work experience within sowEH's operational framework.

Selected candidates will serve as **sowEH Administrative and Outreach Coordinator (AOC)**, working part-time under the supervision of Director Finance and Director Station & Monitoring. Their responsibilities will include office administration, coordination, and project management tasks.

*The candidate will undergo 2 – 4 weeks of training, followed by a 5-months' probation period. Upon successful completion, the scholarship will continue for **two years** or until the end of their academic program **whichever comes first**.*



If probation requirements are not met, the scholarship will be terminated after one semester.

Eligibility Criteria

- Open to both male and female candidates (**Hunza Domicile**).
- Must be a student at Karakoram International University, (**Hunza Campus Only**).
- Enrolled in BBA (3rd – 5th semester).
- Minimum 3.00 CGPA.
- Demonstrated interest or experience in social work and community development.
- Must have access to a laptop and a reliable internet connection for remote work.
- Can work from home with occasional field visits within Hunza (**15 hours per week**)

Benefits

- Up to PKR 30,000 semester fee coverage (**paid directly to the university**).
- Monthly stipend: PKR 8,000.
- Office resources: Printer and stationery will be provided.
- Experience letter & scholarship certificate upon completion.
- Mentorship and networking with industry experts



This program is not just a scholarship — it's an opportunity to build academic excellence and professional experience that will strengthen your future career.

How to Apply

- Download the application form by scanning QR code provided on the cover page.
- You are not required to complete SECTION VII of the application form. However, you need to send an *Academic Reference Letter.
- Scan and send your completed application form on: scholarships@soweh.org.
- A personal statement (typed, max 1-page A4) describing your suitability and potential contributions as a **sowEH Administrative and Outreach Coordinator (AOC)**.

*Academic Reference Letter (***on official letterhead or from official email***) by a faculty member for your suitability for this program. It is recommended that your referee should send it directly on scholarships@soweh.org or you can send it along with your application.

Application Deadline: Before 11:59 pm on 31 December 2025



sowEH Scholarship for Women in STEM & sowEH WiSE (Women in STEM Empowerment) Program

The **sowEH Scholarship for Women in STEM (Science, Technology, Engineering and Mathematics)**, initiated by **Dr. Fatima Bano**, is a pioneering program, the first of its kind not only in **Gilgit-Baltistan** but at the **national level**. Aimed at addressing the underrepresentation of women in **Science, Technology, Engineering, and Mathematics (STEM)**, this scholarship offers both **financial support** and **encouragement** to talented female students pursuing STEM education.



Through **sowEH Scholarship for Women in STEM**, sowEH aims to nurture a generation of **empowered women leaders** who will drive **technological innovation, medical research, environmental sustainability, and scientific advancement**. By investing in their education today, we are helping to build a future where women **lead, innovate, and inspire positive change**.

The **sowEH WiSE Program (Women in STEM & Empowerment)** is an **extended unit** of sowEH Scholarship for Women in STEM. Candidates selected under the WiSE Program will receive a monthly **stipend of PKR 6,000**.



To be considered for the WiSE program candidate should be willing to work with sowEH as **IT coordinator** who will be responsible for **managing the sowEH's website and social media platforms**. Ideal candidate should have ability to manage the above responsibilities, and candidate will be selected after an interview.

Only WISE Scholars: *The candidate will undergo 2 – 4 weeks of training, followed by a 5-months' probation period. Upon successful completion, the scholarship will continue for **two years** or until the end of their academic program **whichever comes first**.*

If probation requirements are not met, the scholarship will be terminated after one semester.



Eligibility Criteria (STEM & WiSE)

- Only female candidates (***Any Domicile in GB***).
- Must be a student at Karakoram International University, (***Gilgit and Hunza Campus Only***).
- Only for Mathematics, Engineering and Computer Science students.
- Only Computer Science Students can opt for **WiSE program**.
- Students of 1st – 6th semester (*only students of 3rd – 5th semester can opt for WiSE Program*).
- Minimum 3.00 CGPA.
- Can demonstrate experience or ability in managing websites and social media platforms, with a strong interest in social work and community development through digital initiatives.
- Must have access to a laptop and a reliable internet connection for remote work.

Benefits

- Up to PKR 30,000 of semester fee coverage (***paid directly to the university***).
- Monthly stipend of PKR 6,000 – **only WiSE scholars**.
- Work from home (**10 hours per week**) – **only WiSE scholars**.
- Experience Letter & scholarship certificates upon completion.
- Mentorship and networking with industry experts

How to Apply

- Download the application form by scanning QR code provided on the cover page.
- You are not required to complete SECTION IV of the application form. However, you need to send an *Academic Reference Letter
- Scan and send your completed application form on: scholarships@soweh.org.
- A personal statement (typed, max 1-page A4) describing your suitability for the scholarship and if you have opted for **WiSE Program**, you should also elaborate your potentials to work as **sowEH IT Coordinator**.

*Academic Reference Letter (***on official letterhead or from official email***) by a faculty member for your suitability for this program. It is recommended that your referee should send it directly on scholarships@soweh.org or you can send it along with your application.

sowEH STEM Scholarship is valid for one year only. However WiSE program is valid till completion of two years including probation period.

Application Deadline: Before 11:59 pm on 31 December 2025



sowEH Women for Women Empowerment Scholarship

sowEH is proud to announce the launch of the **Women for Women Empowerment Scholarship**, a first-of-its-kind initiative not only in Gilgit-Baltistan but across Pakistan. Guided by the belief that **true empowerment begins with women supporting women**, this program is **exclusively supported by women**. It is designed to inspire, uplift, and empower women, fostering a culture of education, solidarity, and collective progress.



Conceptualized by **female members** (*Dr. Fatima Bano, Miss Farheen and Saima Noor*) of sowEH, this pioneering initiative promotes **women's education** by fostering a strong culture of **mutual support, resilience, and empowerment** among women.

The scholarship aims to **support and motivate exceptional female students** who exhibit **academic excellence, determination, and a passion for learning**. By investing in the next generation of educated women, sowEH envisions building **stronger families, healthier communities, and a more equitable society**.

Eligibility Criteria

- Only female students (**Hunza Domicile**).
- Open to students enrolled in schools across Hunza.
- Applicable for SSC and HSSC students in any subject field.
- Must have achieved a minimum of **65% marks** in the previous academic year.

Scholarship Value

- Financial support covering up to 100% of tuition fees (maximum PKR 5,000).
- Recognition certificate to strengthen the student's academic and personal portfolio.

How to Apply

- Download the application form by scanning QR code provided on the cover page.
- Complete your application including faculty recommendation as instructed therein.
- Scan and send your completed application form on: scholarships@soweh.org.

Application Deadline: Before 11:59 pm on 10 January 2026



sowEH Merit-cum-Need Based Scholarship



The **sowEH Merit-cum-Need Based Scholarship** is designed to empower students who demonstrate **academic excellence, leadership potential, and a strong commitment to community service**, yet face financial challenges. Beyond providing financial support, this initiative embodies sowEH's belief in **nurturing future leaders and changemakers** who can contribute meaningfully to society.

Aligned with sowEH's broader mission under the **SEEDS Program**, the scholarship also encourages **holistic development**, fostering critical thinking, innovation, and social responsibility. Recipients are supported not only financially but also through **mentorship, skill-building opportunities, and engagement in sowEH's educational and community initiatives**, ensuring that they grow as well-rounded individuals equipped to drive sustainable change in their communities.

Eligibility Criteria

- Open to both male and female students (**Hunza Domicile**).
- Open to students enrolled in schools across Hunza.
- Applicable for SSC and HSSC students in any subject field.
- Must have achieved a minimum of **65% marks** in the previous academic year.

Scholarship Value

- Financial support covering up to 100% of tuition fees (maximum PKR 5,000).
- Recognition certificate to strengthen the student's academic and personal portfolio.

How to Apply

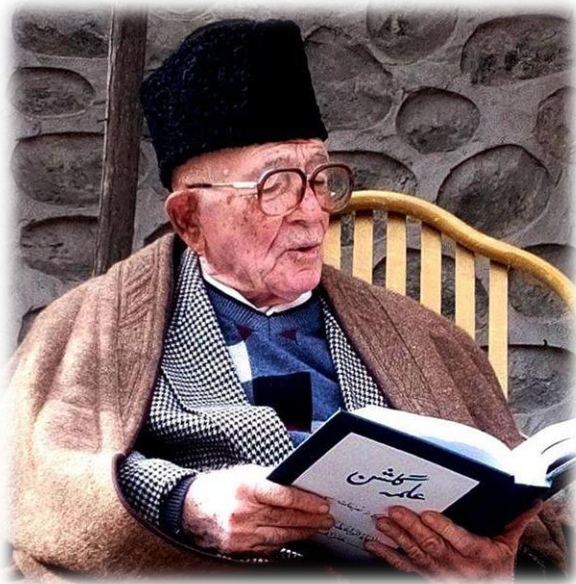
- Download the application form by scanning QR code provided on the cover page.
- Complete your application including faculty recommendation as instructed therein.
- Scan and send your completed application form on: scholarships@soweh.org.

Application Deadline: Before 11:59 pm on 10 January 2026



Alija Ustad Ghulam Uddin Ghulam Hunzai Memorial Fund for Educational Change

Alijah Ghulam Uddin Ghulam Hunzai is remembered as one of the most revered scholars and poets of Gilgit-Baltistan, a true luminary who served humanity beyond distinctions of faith or community. Widely known as Ustad Ghulam Uddin (with Ustad meaning "Educator" in Burushaski), he devoted over eight decades to educating and enlightening the people of Gilgit-Baltistan.



This scholarship is a humble attempt to preserve his values and extend his legacy by providing academic opportunities to talented and deserving students who embody his principles of service, integrity, and wisdom. It recognizes not only academic excellence but also a commitment to giving back to society, nurturing individuals who will continue his mission of spreading knowledge and strengthening the community.

Eligibility Criteria

- Open to both male and female students (**Any Domicile in GB**).
- Open to students enrolled in schools across Gilgit Baltistan.
- Applicable for SSC and HSSC students in any subject field.
- Must have achieved a minimum of **65% marks** in the previous academic year.

Scholarship Value

- Financial support covering up to 100% of tuition fees (maximum PKR 6,000).
- Recognition certificate to strengthen the student's academic and personal portfolio.

How to Apply

- Download the application form by scanning QR code provided on the cover page.
- Complete your application including faculty recommendation as instructed therein.
- Scan and send your completed application form on: scholarships@soweh.org.

Application Deadline: Before 11:59 pm on 10 January 2026



The First Scholar Dr Sher Zaman Award for Academic Excellence



The First Scholar Dr Sher Zaman Award for Academic Excellence is launched in honor of **Dr Sher Zaman who was a pioneer in education, becoming the first PhD from Gilgit Baltistan** and setting a precedent for academic excellence in the region. His dedication to knowledge, research, and intellectual growth not only elevated his own journey but also inspired generations to pursue higher education.

This scholarship aims to support and motivate exceptional students who demonstrate outstanding academic potential, resilience, and a commitment to learning. By investing in the next generation of scholars, we seek to empower bright minds, foster a culture of meritocracy, and ensure that education remains a driving force for progress in our community.

Eligibility Criteria

- Open to both male and female students (**Hunza Domicile**).
- Open to students enrolled in schools across Hunza.
- Applicable for SSC and HSSC students in any subject field.
- Must have achieved a minimum of **65% marks** in the previous academic year.

Scholarship Value

- Financial support covering up to 100% of tuition fees (maximum PKR 5,000).
- Recognition certificate to strengthen the student's academic and personal portfolio.

How to Apply

- Download the application form by scanning QR code provided on the cover page.
- Complete your application including faculty recommendation as instructed therein.
- Scan and send your completed application form on: scholarships@soweh.org.

Application Deadline: Before 11:59 pm on 10 January 2026



Zia-ul-Karim Memorial Scholarship for Education & Excellence

Zia-ul-Karim was a multi-instrumentalist musician, musicologist, and educator from Altit, Hunza Valley, Gilgit-Baltistan, Pakistan. Born in the mid-1990s, he dedicated his life to preserving and promoting the rich musical heritage of his region. Zia pursued a **degree in Musicology from the National College of Arts (NCA)** in Lahore, graduating **with distinction in 2019**. His academic journey was marked by a deep commitment to reviving indigenous musical instruments and traditions.



In honor of the late Zia-ul-Karim, a cherished brother and esteemed community member, we are proud to announce the establishment of the Zia-ul-Karim Memorial Scholarship for Education & Excellence.

Eligibility Criteria

- Open to only students of late Zia-ul-Karim
- Both male and female students
- Any educational level.
- Must have achieved a minimum of **65% marks** in the previous academic year.

Scholarship Value

- Financial support covering a certain percentage of tuition fees.
- Recognition certificate to strengthen the student's academic and personal portfolio.

How to Apply

- Download the application form by scanning QR code provided on the cover page.
- Proof of being student of late Zia-ul-Karim from LLMC or other musical body.
- Complete your application including faculty recommendation as instructed therein.
- Scan and send your completed application form on: scholarships@soweh.org.

Application Deadline: Before 11:59 pm on 10 January 2026



New Beacon House School Altit Hunza Alumni Scholarship: Empowering the Next Generation



The idea for the Beacon House School Altit Alumni Scholarship emerged from a shared sense of gratitude among former students who recognized the profound impact their alma mater had on their personal and professional lives. Many alumni, now excelling in diverse fields, felt a collective responsibility to extend the same opportunities to talented students facing financial constraints.

The scholarship is structured as a merit-cum-need-based program, ensuring that recipients are chosen based on academic performance, financial need, and dedication to education.

Eligibility Criteria

- Open to both male and female students.
- Only students of **New Beacon House School Altit**.
- Applicable for 7th – 10th students.
- Must have achieved a minimum of **65% marks** in the previous academic year.

Scholarship Value

- Financial support covering up to 100% of tuition fees (maximum PKR 5,000).
- Recognition certificate to strengthen the student's academic and personal portfolio.

How to Apply

- Download the application form by scanning QR code provided on the cover page.
- Complete your application including faculty recommendation as instructed therein.
- Scan and send your completed application form on: scholarships@soweh.org.

Application Deadline: Before 11:59 pm on 10 January 2026



Email Format:

Please compile your email in the format below and attach all required documents with this email and send it to scholarships@soweh.org before deadline.

Your Full Name – sowEH Scholarship Program – Cycle 2026 (Subject)

Scholarship Committee,
sowEH

Duly filled and completed application form along with required documents are enclosed for kind consideration, please.

Regards
Your Full Name

Important Notice 1:

- *Only applications submitted via scholarships@soweh.org before the deadline will be considered. ***Email format** is appended below.*
- *Applications sent through **WhatsApp** or in **hard copy** to any sowEH member **will not be accepted**.*
- *For general inquiries, please contact us at info@soweh.org or via **WhatsApp: +44 7415 375653**.*
- *Please note that the number of scholarships is **very limited**. This is **not a form of financial aid**, but an opportunity earned **through merit-based competition and celebration of excellence**.*

Important Notice 2:

We recognize that many families and individuals are facing significant financial and personal hardships, and we extend our sincere sympathy to those affected. However, sowEH is bound by its mandate and is unable to provide assistance that is purely need-based or charity in nature. Our support is awarded through merit-cum-need incentives designed to promote meritocracy, self-confidence, dignity, and long-term empowerment.

We kindly ask that you refrain from approaching sowEH solely for need-based assistance, as we will not be able to respond to such requests.



Sample Personal Statement

(Only for SISP, STEM and WiSE Program candidates)

Personal Statement for sowEH STEM Scholarship – Your Full Name

From a young age, I have been fascinated by how computers transform ideas into reality—from solving everyday problems to connecting people across the world. Growing up in Hunza, where access to technology and advanced computer science education for girls is still emerging, I developed a strong determination to pursue this field and become part of a generation of women shaping the digital future. My goal is not only to excel academically but also to use technology as a tool for community development, innovation, and empowerment.

Choosing Computer Science has allowed me to explore my interests in artificial intelligence, programming, and data-driven solutions. During high school, I completed Google's *Fundamentals of Python Programming* course and later joined the *SheCodes Online Bootcamp*, where I developed a simple web app to track student attendance and performance for rural schools. Recently, I participated in a hackathon organized by *Code for Pakistan*, where my team designed a prototype for an air-quality monitoring app providing real-time health insights—an experience that strengthened my interest in AI-driven public health solutions.

My passion lies in developing intelligent systems that address real-world challenges, especially in education accessibility, health awareness, and environmental sustainability. I believe technology can promote equality by providing rural communities with digital access to knowledge and opportunities, a vision that aligns closely with sowEH's mission of empowering communities through education and health.

Beyond academics, I actively volunteer in local awareness sessions to inspire girls to explore STEM fields. As part of *Tech4Girls Hunza*, I have helped school students learn the basics of coding and digital literacy. Leading a workshop introducing HTML and Scratch to 25 students was a deeply fulfilling experience that strengthened my belief that empowering one girl in technology can uplift an entire community.

The sowEH STEM Scholarship represents more than financial support—it symbolizes trust, recognition, and encouragement for young women like me who aim to merge technical knowledge with social purpose. This opportunity will help me enhance my skills and contribute to sowEH's vision of building a sustainable and educated society through innovation and indigenous talent.

Note:

*This is only a **sample statement provided for guidance purposes**. Applicants are encouraged to write their own personal statement in their **own words**, explaining their **motivation, interests, and suitability** for the respective programs.*